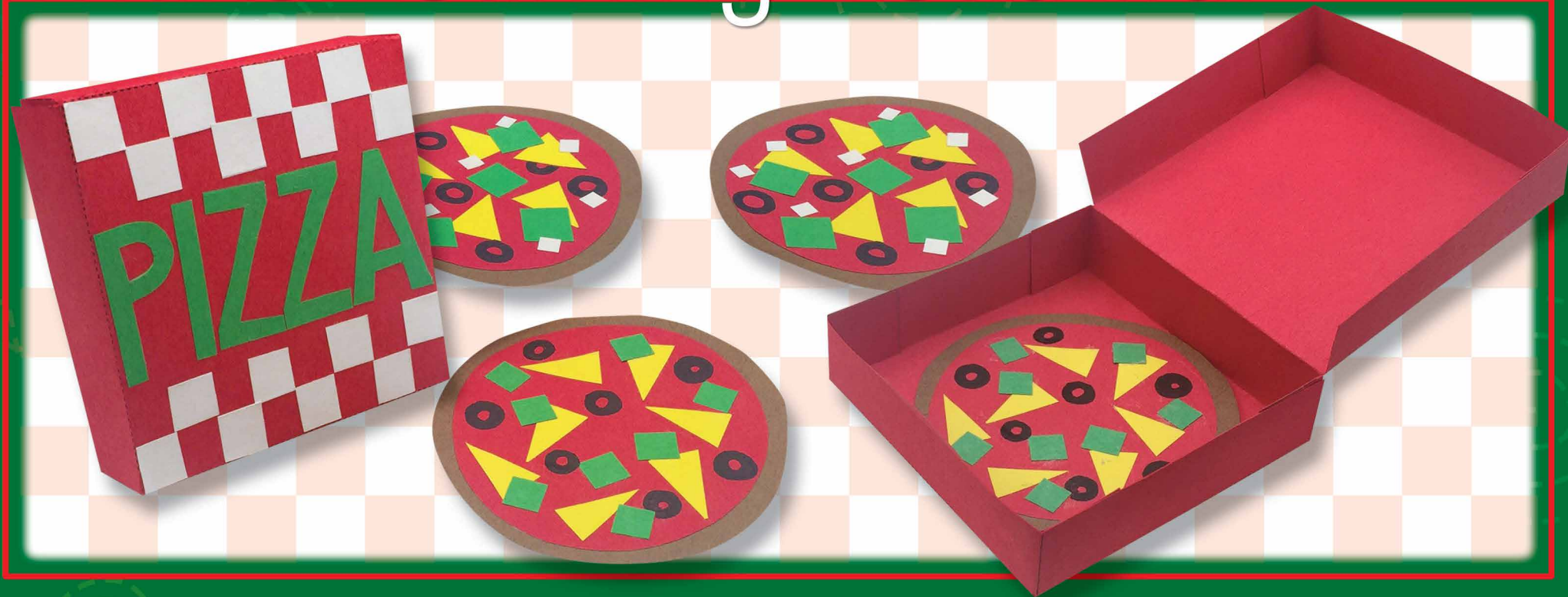


# Make Learning Beautiful

with Riverside 3D™  
Construction Paper



## For Grade 2 Mini Pizza Party!

### Applicable Common Core Standards for Grade 2

**CCSS.MATH.CONTENT.2.G.A.2** – Partition a rectangle into rows and columns of same-size squares and count to find the total number of them.

**CCSS.MATH.CONTENT.2.G.A.3** – Partition circles and rectangles into two, three, or four equal shares, describe the shares using the words halves, thirds, half of, a third of, etc., and describe the whole as two halves, three thirds, four fourths.

Favorite  
Pacon® products  
included in this  
Lesson Plan:



**RIVERSIDE 3D™ Construction Paper**  
The only super heavyweight construction paper made with 100% recycled fiber content. It is 75% heavier and five times stronger than lightweight construction paper and also ranks #1 in color consistency among all groundwood construction papers. It has a soft, eggshell finish and is perfect for building 3D models and a wide variety of STEAM projects. Acid free. 100% recycled fiber content and recyclable. ♻️ ♻️



Riverside 3D™ Construction Paper,  
10 Color Assortment (Light Blue, Blue,  
Green, Yellow, Orange, Red, Pink,  
Brown, White and Black)  
#103637 9" x 12", 50 Sheets/Pkg.  
#103645 9" x 12", 220 Sheets/Pkg.



# Make Learning Beautiful with Riverside 3D™ Construction Paper - Mini Pizza Party!

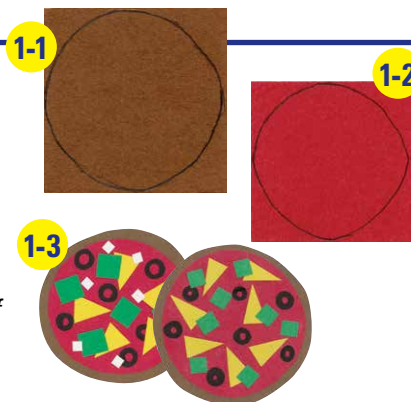
Developed by: Kathy Barbro, ArtProjectsforKids.org

Art integration sparks creativity, inspires achievement and creates success for students through a hands-on, creative learning design resulting in a much deeper understanding of concepts.

## STEPS:

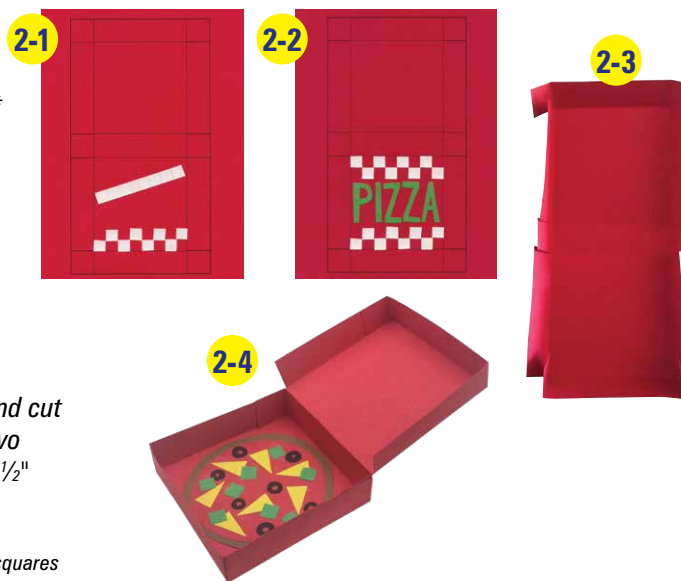
### Making the Pizza:

- 1-1. First draw a  $3\frac{3}{4}$ " circle on a  $3\frac{3}{4}$ " square piece of Brown Riverside 3D™ Construction Paper.
- 1-2. Then draw a  $3\frac{3}{4}$ " circle on a  $3\frac{3}{4}$ " square of Red Riverside 3D™ Construction Paper. Cut out and glue to center of Brown paper circle.
- 1-3. Cut cheese triangles out of Yellow construction paper, Green pepper squares out of Green construction paper. Draw on Black olives with Black marker. Or have students add their own favorite toppings (i.e. mushrooms and sausage out of Brown construction paper, onions out of White construction paper, pepperoni out of Orange construction paper. Pineapple out of Yellow construction paper and spinach out of Green construction paper). Glue on to pizza.



### Making the Pizza Box:

- 2-1. Starting with two  $4" \times 1\frac{1}{2}"$  strips of White construction paper, fold each in half three times to make eight sections. Cut and glue squares to the top of the pizza box to create checkerboard pattern.\*
- 2-2. Cut PIZZA letters out of a  $4" \times 1\frac{1}{2}"$  piece of Green construction paper. Glue to pizza box.
- 2-3. Cut out box template. Cut slits on solid lines. Fold on dotted lines.
- 2-4. Glue tabs in place to form box. Press to stay in place.
- 2-5. Divide pizza into pieces as desired.\*\*



\*\*\* **Added challenge:** For Steps 1-1 and 1-2 have the children measure and cut their own squares of construction paper. For Step 2-1 have them cut two  $4" \times 1\frac{1}{2}"$  strips out of White construction paper and for Step 2-2 a  $4" \times 1\frac{1}{2}"$  piece out of Green construction paper.

\* CCSS.MATH.CONTENT.2.G.A.2 – Partition a rectangle into rows and columns of same-size squares and count to find the total number of them.

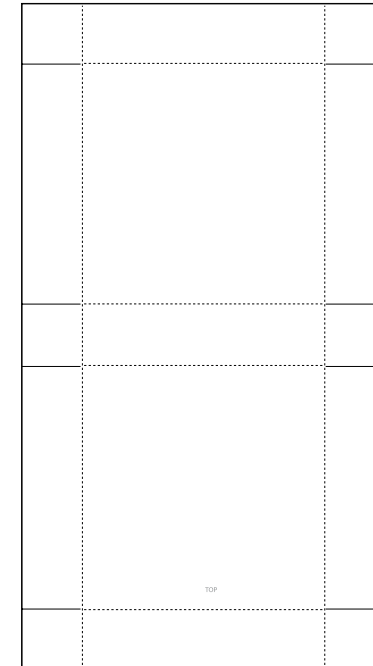
\*\* CCSS.MATH.CONTENT.2.G.A.3 – Partition circles and rectangles into two, three, or four equal shares, describe the shares using the words halves, thirds, half of, a third of, etc., and describe the whole as two halves, three thirds, four fourths.

\*\*\* CCSS.MATH.CONTENT.2.MD.A.1 – Measure the length of an object by selecting and using appropriate tools such as rulers, yardsticks, meter sticks, and measuring tapes.

## MATERIALS NEEDED:

- #103637 Riverside 3D™ Const. Paper, 9" x 12", 10 Color Assortment, 50 Sheets/Pkg. or #103645 Riverside 3D™ Const. Paper, 9" x 12", 10 Color Assortment, 220 Sheets/Pkg.
- Box template printed on Red 9" x 12" Riverside 3D™ Construction Paper
- Scissors
- Glue stick
- Black marker
- Ruler (optional)

### Box Template (Enlarge 300%)



For more lesson plans go to: [pacon.com/projects](http://pacon.com/projects)

Look for our scholar sun icon throughout our projects page to easily find lesson plans or projects with learning objectives.

